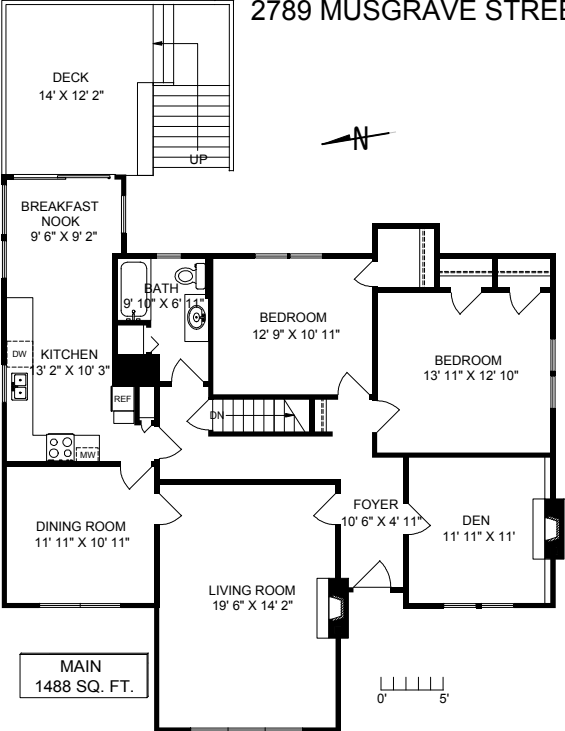
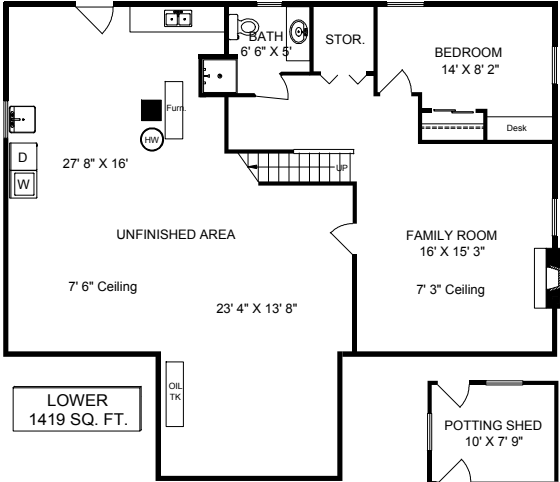


2789 MUSGRAVE STREET



MAIN
1488 SQ. FT.



LOWER
1419 SQ. FT.

POTTING SHED
10' X 7' 9"

CARPORT
17' 4" X 10' 6"

| | FINISH SQ. FT. | UNFINISH SQ. FT. | TOTAL SQ. FT. |
|---------|----------------|------------------|---------------|
| MAIN | 1488 | | 1488 |
| LOWER | 627 | 792 | 1419 |
| TOTAL | 2115 | 792 | 2907 |
| DECK | 170 | | 170 |
| CARPORT | 184 | | 184 |
| SHED | 86 | | 86 |

2789 MUSGRAVE ST EXCLUSIVELY FOR INEZ LOUDEN OF SUTTON WESTCAN

JAN. 10, 2007

REF # 1739

Island Measure Victoria, B.C.

818-8273 David Ophelkens

MEASUREMENTS MAY NOT BE 100% ACCURATE. IT CRITICAL BUYER TO VERIFY FROM SITE. WE DO NOT USE TO CONDUIT. THESE FLOOR PLANS ARE PROVIDED FOR CONVENIENCE ONLY.